

Historic, Archive Document

Do not assume content reflects current scientific knowledge, policies, or practices.

624 11

GARDEN BOOK - SPRING 1944



COLUMBINE
 Long Spurred
 Hybrids
 Colorado
 State Flower



PANSIES
 Mile High
 Giants
 Colorado-Grown
 Seed



MILE HIGH SEED CO.

Retail Store, 118 North Fourth St.

Grand Junction, Colorado



Hello, Friends



Here
Is the
Little
Seed
Book
You
Have
Been
Waiting
For



Buy
Quality
Mile High
Seeds.
Invest
Your
Savings
In War
Stamps
and Bonds

TRUMAN
Parks

NEAL
Plaisted

BOB
Hill

REPORTING TO YOU, OUR COMMANDER. We have worked hard and long this past year buying, growing, preparing, and processing **Mile High** seeds for your 1944 Victory Garden and field crops. **GUARDING THE MOST IMPORTANT SECTION OF THE HOME FRONT—YOUR SEED SUPPLY.**

Our efforts have been rewarded with warehouses well stocked with the best seeds that careful production and selection can produce; including garden, flower, and field seeds. Our stocks will be complete with very few short items.

AT YOUR SERVICE. COMMAND US EARLY AND OFTEN. Each department is still headed by a man of long service and experience.

This year Garden Seed prices will be subject to change when our present stock is sold out.

All Garden and Flower Seed prices in quantities listed in this catalogue are postpaid.

Field Seed prices change with farm commodities. These prices will be found on the back of the enclosed order blank, and are not postpaid except in one-pound lots. Use this blank when ordering.

If you grow a large garden, or if you wish to buy large quantities of grass, clover, alfalfa or seed grain, be sure to write us for special prices. We are always glad to answer your letters.



A Beautiful Lawn With Mile High Lawn Mixture

We carry large stocks of Kentucky Blue Grass, White Dutch Clover, English Blue Grass, Bent Grass, Perennial Rye and Domestic Annual Rye Grass. All prices quoted on the yellow price list enclosed. We shall be glad to suggest mixtures for best results for all types of soil. Ask us to quote prices on large quantities.

ASPARAGUS

254 **Mary Washington.** The largest, most desired variety of asparagus. Is of the rust-resistant type and very productive. Pkt, 5c; oz, 15c; $\frac{1}{4}$ lb, 35c; lb, 95c. Postpaid.

BEANS

Our beans have been carefully hand picked and will reach you clean. 1 lb. to 200 ft. of row, 35-40 lbs. per acre.

281 **Round Pod Kidney Wax or Brittle Wax.** (59 days.) A bean of superb quality for all purposes and wonderfully productive. Finest for canning because it is entirely stringless. Round pods, medium vine.



Brittle Wax

286 **Pencil Pod Black Wax.** (59 days.) Stringless, thick, meaty pods, averaging 6 in. long. Seeds black. A very good bean.

268 **Tendergreen New Stringless.** (55 days.) Green pod, plants medium, heavy producer, beautiful dark green straight pods, round, meaty. This is our choice of all green pod beans. We believe it will completely replace both Burpee and Giant Stringless.

267 **Giant Stringless.** (55 days.) Like Burpee, but pods are larger.

261 **Bountiful Stringless.** (55 days.) Prolific producer of long, well filled pods. A wonderful bean.

263 **Plentiful (Black-Seeded Bountiful).** (52 days.) All-American selection. Pods green, 7 in. long; thick, meaty and stringless. Vine 16 to 18 in. high; vigorous.

266 **Burpee or Landreth Stringless.** (53 days.) An improved Burpee, large pods, tender and stringless, one of the best home garden beans.

295 **Kentucky Wonder.** (65 days.) Pole bean. Strong climber, hardy and very prolific over a long season, bearing until frost comes; older beans slightly stringy.

320 **Henderson's Bush.** (65 days.) The Baby Lima or Butter Bean.

Prices on above: Pkt, 5c; $\frac{1}{4}$ lb, 10c; $\frac{1}{2}$ lb, 20c; lb, 40c; 10 lbs, \$3.25, postpaid.

316 **Burpee's Improved Bush Lima Beans.** (75 days.) Beans white with greenish tinge. Plants are large, erect and very productive.

317 **Fordhook Bush Lima Beans.** (75 days.) Large vigorous plants; beans thick and of excellent quality.

314 **King of the Garden Pole Lima.** (88 days.) Most popular pole lima. Large pods, flat beans.

Prices: Pkt, 10c; $\frac{1}{4}$ lb, 15c; $\frac{1}{2}$ lb, 30c; lb, 45c; 10 lbs, \$3.80, postpaid.

BEETS

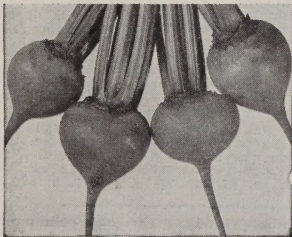
Beets may be planted as early as condition of the soil will permit, 1 inch deep, rows 16 inches apart. Plant them thick and thin out, using young plants for beet greens.

327 **Detroit Dark Red.** (55 days.) An old-time standard for home and market garden, shipping and canning.

334 **Canner's Favorite.** (52-55 days.) Dark blood-red.

324 **Early Wonder or Early Model.** (48 days.) A fine selection from Crosby's Egyptian, a little smaller and earlier.

326 **Crosby's Egyptian.** (55 days.) Probably the most widely used of all varieties of beets. Early, good size and good yield.



Canner's Favorite

328 **Improved Early Blood Turnip.** (65 days.) A medium early variety, good for summer or winter.

Pkt, 5c; oz, 20c;
 $\frac{1}{4}$ lb, 70c;
1 lb, \$2.25, postpaid.

337 **Swiss Chard. Lucullus.** (50 days.) Leaves yellowish green and heavily crumpled. A fine vegetable.

Pkt, 5c; oz, 15c;
 $\frac{1}{4}$ lb, 55c;
1 lb, \$1.90, postpaid.

MANGELS

Yield as high as 20 tons per acre. Fine for stock or poultry in winter as a substitute for green feed. 1 oz. to 100 ft. of row; 5 to 6 pounds per acre.

- 345 Dairy Giant Mangel. (95 days.) Especially recommended to dairymen. Grows half above ground and is easily harvested. Reddish yellow; small top.
- 346 Prize Mammoth. (100 days.) Yields up to 40 tons. Red roots; mostly above ground; excellent keeper.
- 339 Danish Sludstrup. (110 days.) Introduced by Danish government; extra good quality and yield.
- 342 Long Red. (120 days.) Immense crops; flesh white, shaded red. Very long mangel.
- All priced: Oz, 15c; $\frac{1}{4}$ lb, 50c; lb, \$1.50.

BROCCOLI

Cultivated and used like cauliflower. Adapted to moist, long-season sections.

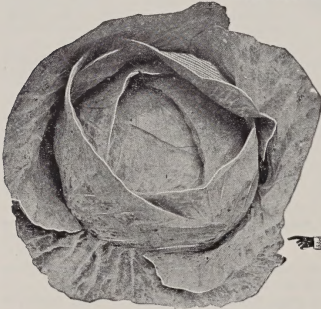
- 349 St. Valentine. Large, white heads.
Pkt, 5c; $\frac{1}{2}$ oz, 25c; oz, 40c; $\frac{1}{4}$ lb, \$1.25, postpaid.
- 348 Green Christmas Calabrese. It is of branching growth with tender, loosely formed, delicious green heads.
Pkt, 5c; $\frac{1}{2}$ oz, 20c; oz, 35c; $\frac{1}{4}$ lb, 95c; lb, \$2.90, postpaid.

BRUSSELS SPROUTS

Sprouts like small cabbages form on stalk of plant; more delicate flavor than cabbage.

- 351 Long Island Improved. (110 days.) Choice, compact variety.
Pkt, 5c; $\frac{1}{2}$ oz, 40c; oz, 70c, postpaid.

CABBAGE



Our cabbage seed is the result of years of careful selection. Contains vitamins A, B and C, when used cooked or raw. Ounce to 2,000 plants.

- 366 Earliest Of All. (60 days.) Earliest round head cabbage. Small but solid; quality is equal to that of Copenhagen Market.
- 365 Golden Acre. (63 days.) Our strain of Earliest of All is a little finer selection.
- 352 Copenhagen Market. (68 days.) One of the best early round heads.

Large, solid, fine grained and fine flavored.

- 355 Glory of Enkhuizen. (80 days.) Some larger and a little later than Copenhagen, used for kraut.
- 358 Stein's Early Flat Dutch. (80 days.) The heads are large, flat and of the finest quality. Valued for its ability to resist heat.
- 356 Early Jersey Wakefield. (70 days.) Cone-shaped; sweetest flavor. Home garden favorite.
- 361 All Head Early. (80 days.) Somewhat larger than Stein's and later. Flat head.
- 377 Perfection Drumhead, Savoy. (90 days.) Solid heads, with crumpled leaves.
- 374 Mammoth Red Rock. (110 days.) Deep red.
- 376 Chinese or Celery Cabbage. For salads.
- 373 Mountain Ballhead, Short Stem. (120 days.) The peak of perfection in a late cabbage. Surpasses all others in size, productivity and hard, tight heads.
- All Cabbage: Pkt, 5c; $\frac{1}{2}$ oz, 40c; oz, 75c; $\frac{1}{4}$ lb, \$2.40; lb, \$6.95, postpaid.

CAULIFLOWER

Our seed has established a wonderful reputation. A favorite delicacy; a money-making crop. 1 oz. to 2,000 to 3,000 plants; 8,000 plants per acre.

- 424 Special High Altitude Danish Snowball. (85 days.) Our extra fine selection for early pure white heads, size, uniformity and freedom from blemishes. We recommend it for your shipping crop or home use. Pkt, 10c; $\frac{1}{16}$ oz, 30c; $\frac{1}{4}$ oz, 95c; $\frac{1}{2}$ oz, \$1.75; oz, \$3.25; $\frac{1}{4}$ lb, \$9.50; lb, \$29.75, postpaid.
- 423—Early Danish Snowball. (85 days.) A good commercial and shipping strain. Pkt, 5c; $\frac{1}{4}$ oz, 70c; oz, \$2.10; $\frac{1}{4}$ lb, \$6.05; lb, \$19.50, postpaid.



Red Cored
Chantenay

CARROTS

Raw carrots contain vitamins A, B and C. An oz. of seed plants 150 ft. Cover seed $\frac{1}{2}$ in. or less.

- 388 Improved Red - Cored Chantenay. (65 days.) Orange-red, very tender and of finest flavor; indistinct core; good keeper and shipper.
- 387 Special Strain Oxheart. (65 days.) An extra select strain of this stump-rooted carrot.
- 386 Emperor. (77 days.) Uniformly tapered to a semi-blunt end. A fine new carrot.
- 383 Chantenay or Half Long Model. (60 days.) Old type, core rather large and definite.
- 384 Danvers Half Long. (65 days.) A heavy yielding general crop variety.
- 385 Nantes. Half-long, nearly coreless. Above carrots priced: Pkt. 5c; oz, 30c; $\frac{1}{4}$ lb, 90c; lb. \$3.10, postpaid.

STOCK CARROTS

- 389 Large White Belgian. (85 days.) For feeding stock. An enormous yielder.
- 392 Red St. Valery. (90 days.) A heavy yielder; bright orange-scarlet flesh. Oz, 25c; $\frac{1}{4}$ lb, 80c; lb, \$2.50, postpaid.

CELERY

Should be planted in house-boxes or hotbeds about March 15th; winter celery about April 15th. Winter celery can be transplanted in the open ground as late as June 15th.

- 427 Golden Plume or Wonderful. (110 days.) Very early; large heart. Pretty golden color; vigorous, and blanches quickly.
- 429 Golden Self Blanching. (120 days.) Is of light yellow color; ribbed stalks, crisp and tender. Blanching easily.
- 433 Giant Pascal. (140 days.) Good type.
- 434 Utah, or Golden Crisp. (130 days.) Winter celery. Round, thick, solid stems; very mild, nutty flavor.

All above priced: Pkt, 5c;
 $\frac{1}{2}$ oz, 35c; oz, 60c; $\frac{1}{4}$ lb, \$1.75.



Colorado Pascal

- 432 Crystal White Utah Strain. (125 days.) Often growing 36 in. high, more heart than any other celery. Can be used for a fall celery or for trench blanching, blanches to a creamy white. Stringless, nutty flavor. Pkt, 10c; $\frac{1}{2}$ oz, 60c; oz, \$1.15; $\frac{1}{4}$ lb, \$3.50.

431 Giant Colorado Pascal. Dwarf Strain—developed especially for the shipping trade. Dwarf stalky growth, free from soft spongy stalks. Blanches easily to a creamy white; for early market. Also the very best for winter trenching. This is the celery that has made Colorado famous; thousands of shipments go out each season as Christmas gifts. Pkts, 20c; $\frac{1}{2}$ oz, \$1.60; oz, \$3, postpaid.

POP CORN

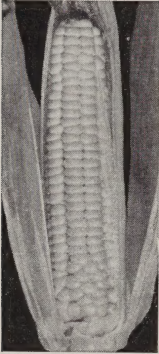
One ounce to 65 feet of row; 4 to 6 pounds per acre.

- 456 Creamy Crisp, or South American. Grains are creamy yellow, large, crisp and delicious.
- 457 Japanese Hulless, or Australian Hulless. Pops white, stalk dwarf; ears short, with pointed kernels. Widely used. Pop Corn prices: Pkt, 5c; $\frac{1}{2}$ lb, 15c; lb, 25c; 10 lbs, \$1.65, postpaid.

SWEET CORN

You get the sweetest corn fresh from your own garden.

- 455 **Golden Gem.** (55 days.) Very earliest and of Bantam quality. Ears not quite as large.
 444 **Spanish Gold.** (56 days.) The best of the real earlies. Good sized ear; finest quality.
 445 **Golden Bantam.** (70 days.) Still a big seller. Everyone knows this popular variety.



Spanish Gold

- 446 **Improved Golden Bantam.** (75 days.) Has larger and deeper kernels than Golden Bantam; same fine flavor.
 450 **Country Gentleman.** (95 days.) Large ears with kernels of uneven size and shape. One of the sweetest and best flavored varieties. A heavy yielder of corn and fodder.
 452 **Golden Giant.** (80 days.) A cross of Golden Bantam. Larger and later; fine quality.
 448 **Stowell's Evergreen.** (90 days.) The ears are large, sweet and tender. Fine table corn; also the favorite for canning.
 447 **Oregon Evergreen.** (80 days.) An earlier cross of Stowell's; in our opinion a little better. Strong, firm husks prevent worm damage to a large degree.
 439—**Golden Sunshine.** (60 days.) The same flavor and color as Golden Bantam, but 10 days earlier. The ears are also larger, being 12-rowed instead of 8.

All above Corn priced: Pkt, 5c; $\frac{1}{4}$ lb, 10c; $\frac{1}{2}$ lb, 20c; lb, 35c; 10 lbs, \$2.95, postpaid.

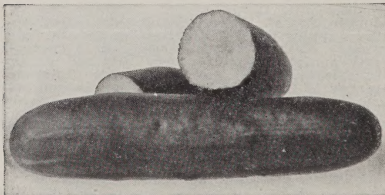
CUCUMBERS

White Spines are best for slicing, shipping or market garden; Black Spines for pickling. An ounce plants about 100 feet of row.

- 473—**Colorado.** (65 days.) Real Quality. We believe our strain of this new variety is the finest slicing and shipping cucumber you can buy. It's the deepest of green, with the purest white and the finest flavored flesh of any we grow. Size $2\frac{1}{2}$ by 10 inches; free from white striping; well rounded full ends.
 479—**Ward's Dark Green.** (Selected Stays Green). (50 days.) Early type. It keeps green; that is, retains its deeper green color longer than most varieties. Very early and probably the most prolific.
 470—**Early Fortune.** (58 days.) Very attractive slicing and shipping variety. Early, productive and disease resistant. Cucumbers, 9 inches long.
 477 **Improved Long Green.** (65 days.) The standard home garden, slicing and pickling type. Prolific, hardy and disease resistant. Beautiful long cucumbers.

Above priced: Pkt, 5c; oz, 20c; $\frac{1}{4}$ lb, 70c; lb, \$2.25. Postpaid

- 467 **Prolific Gem Pickling.** (50 days.) The heaviest yielder of all the picklers. Crisp cucumber, slender in form and tapering at both ends.
 465 **Chicago Pickling, Westerfield.** (60 days.) Very uniform type. Grows large enough to use for dill pickles.
 464 **Boston Pickling.** (55 days.) Early and productive. Short, fairly smooth cucumbers of very symmetrical shape.
 463 **West India Gherkin.** (60 days.) A very prolific, small fruited variety, used exclusively for pickling.



Colorado

- 489 **Ward's Lemon Cucumber.** (70 days.) Small fruits similar in shape and color to the lemon.

Pickling Cucumbers:
 Pkt. ----- 5c
 Oz. ----- 15c
 $\frac{1}{4}$ Lb. ----- 50c
 Lb. ----- \$1.65
 Postpaid.

GARLIC

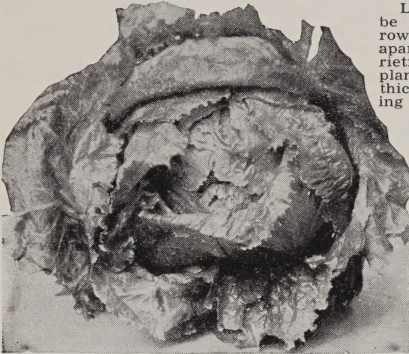
Grown from bulbs only; divide bulbs in planting.
 $\frac{1}{2}$ lb, 30c; lb, 45c; postpaid.

HYBRID SWEET CORN

Far superior to open pollinated sweet corn. Husk wraps higher and tighter on ear, less worm damage. Ears more uniform, better yielder, fine flavor, sturdy stalks and roots.

Hybrid seed not true to type the second year.

- 442 **Golden Cross Bantam.** (80 days.) Has all the advantages of the Hybrid; sturdy, healthy stalks, ears 10- to 14-rowed; very uniform in plant and ear.
- 440 **Tendergold.** (70 days.) Top cross Spanish Gold, stalks medium, deep kernels, beautiful golden color; 10 to 12 rows.
- Hybrid Corn prices: Pkt, 5c; $\frac{1}{4}$ lb, 15c; $\frac{1}{2}$ lb, 25c; lb, 45c. Postpaid.

LETTUCE

Lettuce should be planted in rows 18 to 24 in. apart. Leaf varieties can be planted quite thick; the heading varieties require less seed and should be thinned to one plant every 6 to 8 inches.

544 **Special Strain New York** (80 days.) Selected for solid, hard heads and trueness to type; fine eating qualities.

- 532 **Mile High Wonder.** (80 days.) Our own selection from the New York type. More sure to head and not as subject to tip burn.
- 541 **Mountain Iceberg.** Similar to New York. Our strain is unexcelled for high altitudes.
- 535 **Imperial 847.** (82 days.) Black seeded. Blight resistant, also resistant to heat; quite sure to head under unfavorable conditions; heads large and sweet; good keeper.
- 536 **Imperial 44.** (82 days.) Sure header, even in hot weather; blight resistant; white seeded; heads medium large, compact, savory leaves.

Prices on above heading varieties: Pkt, 5c; oz, 25c; $\frac{1}{4}$ lb, 80c; lb, \$2.95. Postpaid.

- 539 **Improved Hanson.** (Nonpareil). (80 days.) The most reliable variety for general planting; stands hot weather better than any other type. Sure heading.
- 534 **Mammoth Big Boston.** (75 days.) Early and hardy. Big Boston grows to an enormous size, well grown heads measuring from 10 to 12 inches across.
- 540 **May King.** (60 days.) Quickly forms fine hard heads, resembling small cabbages. It is hardy, will bear transplanting.
- 529 **Early Curled Simpson.** Silesia Early Curled. (60 days.) The old-time curly Lettuce, and still very popular. A quick growing, hardy variety. It forms a tight bunch of leaves.
- 528 **Black Seeded Simpson.** (65 days.) Very tender and of excellent flavor.
- 530 **Early Prize Head.** (75 days.) A home garden favorite. Not a head Lettuce, but makes a large and distinct bunch of leaves at the heart.
- 527 **Wards' Improved Grand Rapids.** (60 days.) Well adapted for early spring planting or for greenhouse forcing. It does not form a head.

Prices: Pkt, 5c; oz, 20c; $\frac{1}{4}$ lb, 65c; lb, \$2.10. Postpaid.

MUSTARD FOR GREENS

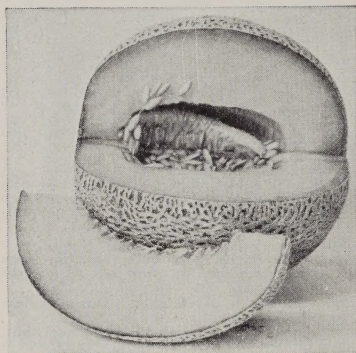
Grows in almost any kind of soil. Does best in cool weather; sow early and follow by sowings at ten-day intervals.

- 547 **Giant Southern Curled.** (50 days.) Curly leaved; popular for fall planting.
- 550 **Chinese Broad Leaf.** (55 days.) Leaves very large and succulent.

Above mustard is priced: Pkt, 5c; oz, 15c; $\frac{1}{4}$ lb, 45c; lb, \$1.35. Postpaid.

MUSKMELONS AND CANTALOUPE

- 397 **H. B. No. 45.** (75 days.) The new Powdery Mildew resistant Melon. True Hale's Best type, rich salmon flesh, small seed cavity, heavily netted, faint stripe. Picked on full slip, will remain in edible condition longer than other varieties.
- 409 **Heart of Gold.** (85 days). Has very thick, sweet flesh, a beautiful golden salmon color. Good size, oval shape, fairly distinct ribs and heavy netting.
- 398 **"H. B."—Hale's Best.** (75 days). A remarkably early shipping variety of excellent quality. Melons are oval in shape, 8 inches long by 4½ inches in diameter with heavy netting.
- 399 **Hale's Best No. 36.** (70 days.) Very prolific; perfectly netted, with a pink flesh showing a slight tinge of red. One of the best varieties in use.
- 402 **Honey Rock or Sugar Rock.** (75 days.) Delicious flavor; nearly round; coarse netting; deep salmon meat.
- 413 **Rocky Ford.** (85 days.) Rust resistant and the finest green-fleshed selection from the Rocky Ford type. Very good home garden melon but will not stand shipping.



H. B. No. 45

- 405 **Honey Dew.** (110 days.) Not a cantaloupe, but more a fall or winter melon. The flesh is emerald green, very thick, melting and fine grain.

Prices on Cantaloupes:

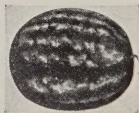
Pkt. -----	5c
Oz. -----	20c
¼ Lb. -----	65c
Lb. -----	\$2.10

Postpaid.

See Page 12 for a Fine Garden Book.

WATERMELONS

- 751 **New Market Early.** (70 days.) Extra early; recommended for short-season localities. Has dark green skin, mottled with darker stripes. Weight about 20 pounds.
- 752 **Ward's Rio Grande.** (75-80 days.) Our own selection for an early, sweet melon. Thin, dark green rind; too tender to ship.
- 758 **Kleckley's Sweet.** (85 days.) Immensely popular. Sweet rich flavor; bright red, solid flesh. Rind too thin for shipping.
- 764 **Tom Watson.** (95 days.) Old, but still a leader. Dark red flesh; deep green rind; thin but tough. About 40 lbs.
- 763 **Improved Dark Seeded Klondike.** (85 days.) Larger than original Klondike; cylindrical, tapering to blossom end; slightly ribbed; small seeds; ships moderate distances. Bright red flesh, finest quality.
- 760 **Striped Klondike.** Differs from the Dark Seeded chiefly in its skin coloring, which is very attractive. Stringless red flesh; many claim this the best of all. 25 lbs.
- 767 **Cannonball, White Seeded.** (90 days.) Practically all solid heart. Round, dark green; a beauty and second to none in quality, 25-30 lbs.
- 765 **Winter Queen.** (95 days.) Round, nearly white. Ripen early, but keep two or three months. Bright red flesh. Weight, 15 lbs.
- 770 **Cannonball Black Seeded.** (90 days.) Flesh, beautiful bright red, solid heart.



Striped Klondike

All above Watermelons are priced: Pkt, 5c; oz, 20c; ¼ lb, 50c; lb, \$1.70. Postpaid.

Citron Red Seeded

Citron Red Seeded, for pickles and preserves. Culture same as Watermelon. Prices: Pkt, 5c; oz, 10c; Postpaid.

ONION SEED—Mountain Grown

Culture. One ounce to 200 feet of drill; 3 to 6 pounds per acre. Soil for Onions should be well drained, rich sandy loam, well fertilized. Sow the seed thinly in drills $\frac{1}{2}$ inch deep and rows 14 inches apart.

554 Mountain Danvers. (95 days.) The earliest and best keeping yellow globe onion. Our Mountain Danvers is a slightly flattened globe. The onions are thin-necked and solid. The skin is a darker color than the Yellow Globe Danvers and the Mountain Danvers mature a month earlier.

573 Yellow Globe Danvers. (125 days.) Similar in color to the Mountain Danvers, true globe-shaped, but a little later.

560 Southport Yellow Globe. (130 days.) A handsome market variety. Medium to large size, true globe shape.



Mt. Sweet Spanish

Above Onions are priced:

Pkt, 5c; oz, 60c;
 $\frac{1}{4}$ lb, \$1.85;
 lb, \$5.95.

Postpaid.

569 White Lisbon. For green onions—early, yet slow to form a bulb.

568 Early White Queen. (95 days.) The little round, white onion used for pickling or in chow-chow. Extremely early, firm flesh and mild in flavor.

566 Crystal White Wax. (120 days.) Pure white, early, extremely mild and sweet. Crystal Wax is also grown from plants.

555 White Portugal. (105 days.) Large, flat, white onion, fine grained, excellent for green bunching or pickles, also keeps well in storage.

559 Mountain Sweet Spanish. (120 days.) The finest and best keeping of the Sweet Spanish types. The onions are large globes and yield an enormous crop of fine flavored bulbs. Mountain Sweet Spanish is in a class by itself for shipping or storage. Special Utah strain.

575 White Sweet Spanish, Mountain Grown. This excellent onion has all the good features of the Mountain Sweet Spanish; the pure white skin makes it even more attractive. Matures in about the same period of time. Our experience is that it yields heavier.

Prices: Sweet Spanish, Crystal Wax, Lisbon, White Queen, and Portugal: Pkt, 5c; oz, 95c; $\frac{1}{4}$ lb, \$2.85; lb, \$8.95. Postpaid.

LEEK

Improved Carentan

A delicately flavored member of the Onion family, equally useful for flavoring soups or as a salad.

524 (90 days.) An early, hardy variety. Pkt, 5c; oz, 60c.

OKRA or GUMBO

Pods are used when young and tender for soups, stews, etc. Dry for winter use. Culture same as for corn. Ounce sows 75 feet of row. Very popular in South.

552 White Velvet. (70 days.) White pods.

553 Perkins Green Pod. (75 days.) Green pods.

Okra prices: Pkt, 5c; oz, 10c; $\frac{1}{4}$ lb, 35c; lb, \$1.10. Postpaid.

HERBS

506 Dill. Leaves and seed heads are used for flavoring pickles. Pkt, 5c; oz, 15c; $\frac{1}{4}$ lb, 40c. Postpaid.

512 Sage. One of the most useful herbs. Pkt, 5c.

ENDIVE

Sow in drills, 1 ounce to about 300 feet. Used in place of lettuce for salads.

- 494 **Green Curled Winter.** (75 days.) Very tasty.
 495 **Broad-Leaved Batavian or Escarolle.** (90 days.) Large, broad leaf, easily blanched. Used for soups and salads.
 496 **Deep Heart Fringed.** New type, full hearts, fine leaves. Blanches to clear, creamy yellow.
Endive prices: Pkt, 5c; oz, 15c; $\frac{1}{4}$ lb, 45c; lb, \$1.45; Postpaid.

EGG PLANT

Culture: One ounce to 1,500 plants, $\frac{1}{4}$ lb. per acre. Start the plants in boxes or hotbed.

- 491 **New York Improved.** (120 days.) Large fruits and entirely spineless. Oval shape.
 492 **Black Beauty.** (110 days.) Ten days earlier than New York. Fruits uniform, blocky, oval shape and dark purple color. Plants dwarf. Egg Plant prices. Pkt, 5c; $\frac{1}{2}$ oz, 30c; oz, 50c; $\frac{1}{4}$ lb. \$1.50; lb, \$4.75. Postpaid.

PEANUTS

Plant in rows 3 feet apart, about 10 inches apart in row. Do best in light, sandy loam soil. Cover the roots or new shoots as they appear.

- 645 **Tennessee Red.** Good yielding sort. Pods long, nuts sweet, frequently 3 to 4 in a pod. Recommended for all but very high altitudes.
 643 **Small Spanish.** Early maturing; small, round nuts, sweet and delicious. Best for short seasons.
 644—**Large Virginia.** Heavy producer, large nuts.
Peanuts priced: $\frac{1}{2}$ lb, 25c; lb, 45c; 5 lbs, \$1.90. Postpaid.

GARDEN PEAS

- 585 **Alaska.** (55 days.) The earliest of all garden Peas. Light green vines, 2 $\frac{1}{2}$ feet high. Pods 2 $\frac{1}{2}$ inches long.
 590 **American Wonder.** (55 days.) One of the earliest wrinkled varieties. Vines only grow about 10 inches high. Pods about 3 inches long, 7 to 8 sweet, fine flavored peas. Very prolific.
 589 **Little Marvel.** (60 days.) Remains in prime picking condition a week longer than any other. Vines 18 inches high. Pods 3 inches long.
 587 **Mile High Supreme.** (55 days.) The largest early wrinkled Pea. It is a dwarf variety, vines 14 to 16 inches high, pods 4 to 4 $\frac{1}{2}$ inches long containing 7 to 9 large Peas of excellent flavor. A fine early canning Pea as it produces a large percentage of its crop at one picking.
 597 **Laxton's Progress.** (58 days.) The earliest and heaviest yielder. Large pods and large Peas, very good flavor, dwarf vine.
 598 **Ward's Bestever.** (60 days.) The best variety of the Gradus type. Sturdy vines growing 2 feet high. Pods 4 inches long.
 592 **Laxtonian or Blue Bantam.** (60 days.) Deep green pods 3 $\frac{3}{4}$ inches long. Vine grows 1 $\frac{1}{2}$ feet high.
 593 **Thomas Laxton.** (60 days.) A selection from Gradus.
 591 **Gradus or Prosperity.** (60 days.) This fine variety combines earliness with large size.
 608 **Dwarf Telephone.** (75 days.) A dwarf strain of the popular Telephone.
 607 **Improved Stratagem.** (79 days.) A superior late variety for home and market garden.
 600 **Dwarf Giant Pod.** (75 days.) Resembles Stratagem, but 4 to 5 days earlier, unequaled in pod size, and exceptional in quality. Pods green, plump, curved at tip; contains 8 to 10 large, succulent peas.
 601 **Alderman.** (78 days.) Pods contain 9 extra large, medium green peas of finest quality. Tall vines.
 602 **Bliss Everbearing.** (70 days.) Exceedingly productive and continues to bear for a long season.
Above priced: Pkt, 5c; $\frac{1}{4}$ lb, 10c; $\frac{1}{2}$ lb, 20c; lb, 35c; 10 lbs, \$2.40. Postpaid.



Mile High

PARSNIPS

- 584 **Ideal Marrowfat.** (100 days.) The sweetest and richest flavor.
 583 **Hollow Crown.** (110 days.) Longer than Marrowfat; about 15 inches long. A good keeper.
Pkt, 5c; oz, 15c; $\frac{1}{4}$ lb, 40c; lb, \$1.35. Postpaid.

PEPPERS

One ounce to about, 1,500 plants. Start in housebox or hot-bed. Plant hot varieties well apart from sweet varieties to prevent mixing.

- 624 **Sunnybrook Pimento.** (110 days.) Flattened apple shape, very mild and sweet. Sturdy vines, producing through a long season.
- 626 **Ruby King.** (120 days.) Vigorous, bushy plants growing 2 feet high. Peppers 5 to 6 inches long and 3 inches across.
- 618 **Bell or Bullnose.** (100 days.) Peppers 2 inches across and 3 inches long. Occasionally hot-fruited.
- 627 **Ruby Giant.** (130 days.) Similar to Ruby King but larger and broader at blossom end. An excellent shipper.
- 619 **Early Mountain.** (100 days.) Always sweet and extremely early. Heart-shaped.
- 625 **Mile High Sweet Giant.** (125 days.) Very large and thick-meated for stuffing or baking. Fine, sweet flavor.
- 617 **California Wonder.** (130 days.) Large, blocky, smooth and thick-meated, sweet and delicious.
- 622 **Chinese Giant.** (135 days.) Largest of the sweet peppers, 4-5 inches each way.
- Above Peppers: Pkt, 5c; $\frac{1}{2}$ oz, 30c; oz, 55c; $\frac{1}{4}$ lb, \$1.60. Postpaid.



Sweet Giant

HOT PEPPERS

- 621 **Long Red Cayenne.** (120 days.) Red hot. Slim pods 5 inches long.
- 623 **Large Mexican Chili.** (120 days.) Dark red pods. For making chili.
- 620 **Red Chili.** (125 days.) Extremely hot peppers 2 to 3 inches long; for seasoning only.
- Hot Peppers are priced: Pkt, 5c; $\frac{1}{2}$ oz, 35c. Postpaid.

PUMPKIN

3 lbs. per acre, or 1 lb. with corn.

- 634 **Small Sugar or Boston Pie.** (70 days.) Early, round, deep orange yellow; weight approximately 4 lbs. Unexcelled quality. Cooks dry and mealy, a fine Pumpkin for pies or canning. Very prolific.
- 640 **Connecticut Field or Big Tom.** (85 days.) The common variety raised for stock feed. Also used for canning. Very prolific and fruits average 15 inches in diameter.
- 637 **King of the Mammoths.** (100 days.) Large cornfield variety; produces a heavy tonnage. Flesh thick but rather coarse.
- Above Pumpkin priced: Pkt, 5c; oz, 10c; $\frac{1}{4}$ lb, 40c; lb, \$1.20.



Small Sugar

SPINACH

- 683 **Bloomsdale.** (40 days.) Early and extra hardy; excellent for fall or real early spring. Crumpled leaf, short stalks.
- 679 **Mountain Evergreen.** (50 days.) Remains tender and in excellent market condition after all other early varieties. Medium sized round leaves, crumpled in center. Intense dark green.
- 684 **King of Denmark.** (45 days.) Produces a thick, round clump of crumpled leaves, dark green, tender and delicious. Stands a long time without seeding.
- 677 **Long Standing Bloomsdale.** (40 days.) Stands two weeks longer than Bloomsdale before going to seed.
- 682 **Giant Nobel Thick Leaf.** (45 days.) Smooth leaved and therefore good for canning, as it washes clean easily. Slow to seed.
- 680 **Large Viroflay.** (65 days.) Desirable for canning, as it has very large, smooth leaves, quite pointed at tip.
- 681 **Flanders Broad Leaf.** (55 days.) Similar to Viroflay, but with rounded bottom edges.
- Prices on above Spinach: Pkt, 5c; oz, 10c; $\frac{1}{4}$ lb, 35c; lb, \$1.10. Postpaid.

- 678 **New Zealand.** (60 days.) Distinct everbearing tall type, bearing a fine crop even in hot weather. Can be cut again and again. Soak seed in tepid water 12 hours before planting. Pkt, 5c; oz, 20c; $\frac{1}{4}$ lb, 65c. Postpaid.

PARSLEY

- 579 **Champion Moss Curled.** Well curled. Best for garnishing.
 582 **Plain or Italian.** Flat and uncurled. Best for flavoring.
 Pkt, 5c; oz, 10c; $\frac{1}{4}$ lb, 30c. Postpaid.

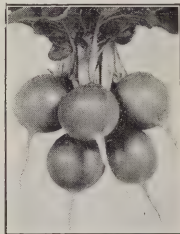


Vick's Scarlet Globe Radish

with white tip; small but uniform; nice appearing.

- 648 **Early Scarlet Turnip.** (21 days.) Excellent quality round, red radish, with crisp, tender flesh.
 650 **Early Scarlet Turnip White Tip.** (21 days.) Similar to the Early Scarlet Turnip but has white tip. Select strain.
 651 **French Breakfast.** (22 days.) Rose scarlet with white tip. Olive shape, nearly 2 inches long.
 658 **Improved White Icicle.** (28 days.) One of the best sellers; 6 inches long, pure white skin and flesh, snappy as an icicle. Very attractive bunched for market; mild flavored.
 657 **Long Scarlet Short Top.** (32 days.) About 6 inches long, straight and smooth. Most popular long red radish.

Add a Garden Book to Your Order. See page 12.



Crimson Giant

- 653 **Crimson Giant.** (32 days.) Crimson Giant is similar to Scarlet Globe, but much larger, remains in edible condition still longer.
 654 **Mixed Radish.** If you are short of space, use mixed seed. Four standard varieties—long red, long white, round red and white tip. All good standard varieties.
 Radishes: Pkt, 5c; oz, 10c; $\frac{1}{4}$ lb, 35c; lb, \$1.10. Postpaid.

Late Maturing and Winter Radishes

Much larger; winter radishes store much like other vegetables.

- 662 **White Strassburg.** (40 days.) An excellent white radish. Larger than icicle and retains its crispness in hot weather.
 668 **China Rose Winter.** (60 days.) Rose-color skin, white flesh. Solid and free from strings.
 669 **White Chinese Winter.** (65 days.) Smooth, white skin.
 671 **Round Black Spanish.** (72 days.) White flesh, black skin. The best keeper of all the winter radishes.
 Radishes: Pkt, 5c; oz, 10c; $\frac{1}{4}$ lb, 35c; lb, \$1.10. Postpaid.

PIE PLANT or RHUBARB

Comes on early in the spring when other fruit and vegetables are scarce.

Thick Red Stalks. Excellent quality.

- 673 **Mammoth.** Large stalks; fine flavor. Pkt, 5c; oz, 25c. Postpaid.

COLLARDS

- 441 **True Georgia.** Withstands heat; vigorous; delicious greens
 Pkts, 5c; oz, 15c; $\frac{1}{4}$ lb, 50c. Postpaid.

RADISH

Ounce to about 300 feet of row.

- 647 **Earliest Scarlet Button.** (18 days.) Extremely early; good quality, but small.
 652 **Early Scarlet Globe.** (22 days.) Recommended for your main sowing. Right behind Scarlet Button and stays crisp, solid and tender for another week's growth. Small tops.

- 649 **Sparkler White Tip.** (21 days.) Beautiful red,

SUMMER SQUASH

Ounce to 15-40 hills, varying with seed; 3-4 lbs. per acre.

- 686 **White Bush Scallop, Patty Pan.** (45 days.) Flat and scalloped. White skin and light green flesh. Bush plants.
- 688 **Yellow Summer Crookneck.** (50 days.) Warty, orange-colored skin and flesh; crooked-over neck; bush type vine.
- 704 **Yellow Straightneck.** (55 days.) Entirely straight.
- 694 **Giant Summer Crooknecks.** (58 days.) Larger and more warty than Yellow Summer Crooknecks, later maturing.
- 703 **Black Zucchini.** (60 days.) Italian vegetable, usable from the time it is three or four days old, when it is commonly creamed like asparagus. Green-black fruits.
- Summer Squash prices: Pkt, 5c; oz, 15c; $\frac{1}{4}$ lb, 45c; lb, \$1.35. Postpaid.

WINTER SQUASH

- 696 **Sibley or Pike's Peak.** (85 days.) Slate gray color similar to Blue Hubbard, but the Sibley is more prolific.
- 691 **Improved Hubbard.** (90 days.) Deep green; one of the best keepers. Fine grained, thick flesh.
- 690 **Delicious.** (85 days.) Heart shaped small Hubbard, about 7 lbs. Of the very best quality.
- 687 **Banana.** (90 days.) As its name implies, long and slender. Skin greenish gray; thick, rich flavor meat.
- Winter Squash prices: Pkt, 5c; oz, 20c; $\frac{1}{4}$ lb, 65c; lb, \$2.10. Postpaid.

Small Table Squash

Improved
Hubbard

- 698 **Ward's Individual.** (60 days.) A delicious little squash, 6 to 7 in. long; striped green and white. Cooks quickly. Try baking whole for the very finest flavor.

- 705 **Table Queen.** (70 days.) Deeply creased, heart shape.

Pkt, 5c; oz, 10c;
 $\frac{1}{4}$ lb, 60c; lb, \$1.90.
Postpaid.

TURNIPS

Ounce to about 150 ft. of row. Sow spring or fall.

- 734 **Early Flat Dutch.** (55 days.) Medium sized; flat. Mild.
- 738 **Extra Early Purple Top Milan.** (50 days.) Flat; fine quality.
- 740 **Purple Top Strap Leaf.** (65 days.) White and a good keeper. Used for table when young, or for stock.
- 735 **Purple Top White Globe.** (70 days.) Handsome, good quality general crop turnip. Nearly round, white with purple top.
- 733 **Early Snowball.** (55 days.) Early small round white.
- Turnip prices: Pkt, 5c; oz, 15c; $\frac{1}{4}$ lb, 45c; lb, \$1.45. Postpaid.

RUTABAGAS

- 748 **Improved American Purple Top.** (95 days.) A hardy productive variety; roots are large, with a very small tap root. Color bright yellow with a purple top.
- Pkt, 5c; oz, 15c; $\frac{1}{4}$ lb, 45c; lb, \$1.45. Postpaid.

KOHL-RABI

- 522 **Early White Vienna.** (50 days.) Extremely early, with distinctly small tops; bulbs medium size, very light green or nearly white and of the best quality.
- Pkt, 5c; $\frac{1}{2}$ oz, 25c; oz, 45c. Postpaid.

SALSIFY OR OYSTER PLANT

Used in soups or may be fried.

Price: Pkt, 5c; oz, 20c; $\frac{1}{4}$ lb, 60c. Postpaid.

KALE or BORECOLE

One ounce of seed sows 200 feet of row.

- 520 **Dwarf Curled Scotch.** This low growing, spreading variety is the kind most commonly grown. The leaves are large, finely curled.
- Pkt, 5c; oz, 15c; $\frac{1}{4}$ lb, 45c; lb, \$1.55. Postpaid.

TOMATOES

- 715 **June Pink.** (65 days.) A pink Earliana, very popular as a shipper. Vine open and fairly small.
- 710 **Bonny Best.** (75 days.) Splendid second-early; medium size red.
- 727 **Rutgers.** (70 days.) Similar to Marglobe. Desirable for market gardeners, for canning or for juice. Ripens from inside out. Wilt resistant.
- 725 **Delicious.** (70 days.) For sheer flavor, fresh or canned; plant a few Delicious. Deliciously mild and sweet; too tender for shipping, but very meaty. Medium to large pink fruits.
- 728 **Oxhart.** (80 days.) Late heart-shaped pink; sweet, mild and very meaty. Not heavy yielder, but often weighs 2 to 3 pounds.
- 713 **Earliana.** (65 days.) Very popular, early, smooth, bright red, of good size. Excellent for early markets.
- 708 **Pritchard. Colorado Select.** (70 days.) First-quality, second-early red; wilt resistant. Medium size, round, smooth and solid; excellent flavor. Excellent shipper; picked white or pink, it ripens to a beautiful red.



Smooth Jumbo

721 **Green's Globe.** (75 days.) Improvement over Break O'Day, similarly disease-resistant, better red color, vines protect fruit better. Interior ripens slowly; well adapted to green-wrap shipping. Heavily productive.

- 720 **Selected Marglobe.** (80 days.) Rust and wilt resisting; good red globe; small seed cavities, firm flesh. Good shipper and canner. One of the heaviest mid-season yielders.
- 719 **Special Strain John Baer.** (75 days.) Vine selected seed. Above Tomatoes are Priced: Pkt, 5c; $\frac{1}{2}$ oz, 35c; oz, 65c; $\frac{1}{4}$ lb, \$1.85; lb, \$5.65. Postpaid.

- 724 **Ruby Gem.** (60 days.) The earliest of all, medium size, prolific, grows in clusters, a beautiful red tomato. The very best for a high altitude short season.
- 730 **Yellow Pear.** (80 days.) Yellow, pear shaped; for pickles or preserving.
- 717 **Ponderosa.** (85 days.) Large, solid, purplish-pink fruits.
- 712 **A new Ward's Jumbo.** (80 days.) A bright red beefsteak type tomato which is exceptionally meaty yet has juice enough for canning. Very non-acid but has a good tomato flavor. People unable to eat ordinary tomatoes on account of acid can eat Ward's Jumbo. A heavy producer.
- 718 **Pearson.** (75 days.) Developed at the California Agriculture College. An excellent red canning or shipping variety.
- 716 **San Marzano.** (80 days.) A small, long, deep red, thick meated, mild flavored variety; fine for soup.
- Prices: Pkts, 5c; $\frac{1}{2}$ oz, 60c. Postpaid.

- 790 **Wonderberry.** A wonderful, prolific plant of the tomato family. Very hardy; when once established the bushes will come up each year from odd seeds dropped on the ground. When ripe the berries are almost an inch in diameter, of shining black color. Fruit is non-edible until fully ripe, but when ripe is wonderful for pies, preserves and jam. A very heavy yielder, the plants being loaded with these berries. Requires no special care or cultivation.
- Pkt, 10c; $\frac{1}{2}$ oz, 25c; oz, 40c. Postpaid.

GARDEN BOOK—Full instruction on preparing soil, planting, fertilizing, cultivating, preparing for storage, and storing all vegetable crops. Also planting and care of small fruit. A 96-page book. Add one to your order. Only 15c, postpaid.

ONION SETS Bottom onion sets, well cured, solid carefully sorted and true to type.

	Qt. or Lb.	4 Lbs.
Yellow Mountain Danvers	30c	\$1.00
White Globe	30c	1.00

Above prices are postpaid. For larger quantities, see back of order blank.

ONION PLANTS Superior quality, hardy, high altitude, outdoor grown onion plants. Shipped direct from the field about March 15th to May 1st.

Crystal Wax. 35c per 100; 85c per 300; \$2.30 per 1000, postpaid.

Mountain Sweet Spanish. 35c per 100; 85c per 300; \$2.30 per 1000, postpaid. For larger quantities, see back of order blank.

MARY WASHINGTON ASPARAGUS ROOTS

The extra large, rust resisting variety. Two-year, old roots, shipped fresh from the field. 50c per dozen; 50 for \$1.10; 100 for \$1.95, postpaid. Not prepaid, \$15.00 for 1000.

RHUBARB ROOTS

Strawberry Rhubarb. Finest, sweetest flavored of all. Red skinned. Good sized roots, with live sprouts. 3 for 55c; \$1.55 per dozen, postpaid.

VEGETABLE PLANTS

Mountain Grown, Transplanted Plants, Sturdy and Hardy.

We Guarantee Delivery of Plants to the Second Zone Only, and do not recommend the shipping of plants beyond the third zone, excepting onion plants. When convenient, express is often better than parcel post for large quantities. Include your plants with your seed order; and specify date you wish plants shipped. We will try to have them reach you on that date.

We do not ship plants C. O. D. Please do not ask it.

	Postpaid			Not
	Doz.	50	100	P'paid
				1000
CABBAGE, Early. Ready April 1st to May 19th. Copenhagen Market Earliest of All, Early Jersey Wakefield, Golden Acre, Glory of Enkhuizen, Stein's Early Flat Dutch	\$.30	\$0.95	\$1.70	10.75
CABBAGE, Late. Ready May 20 to July 15th. Copenhagen Market, Danish ballhead, Hollander Mountain ballhead,25	.60	.90	5.90
CAULIFLOWER, Early. Ready April 1st to May 19th. Special High Altitude Danish Snowball, Dry Weather35	1.00	1.80	12.50
CAULIFLOWER, Late. Ready May 20th to July 15th. Special High Altitude Danish Snowball, Dry Weather25	.60	.90	6.10
CELERY, Early. Ready April 15th to June 14th. Golden Plume. Golden Self Blanching30	.85	1.50	10.75
CELERY, Late. Ready June 15th to July 15th. Giant Colorado Pascal, Utah or Golden Crisp and Crystal White Utah Strain25	.75	1.20	6.90
EGGPLANT. Ready May 1st to June 15th. Black Beauty, New York35	1.00	1.80	12.50
PEPPER. Ready May 1st to June 15th. California Wonder, Chinese Giant, Early Mountain, Mile High Sweet Giant, Ruby Giant, Worldbeater, Sunnysbrook, Cayenne, Mexican Chili, Small Red Chili35	1.00	1.80	12.50
TOMATO. Ready April 15th to July 1st. Ruby Gem, Delicious. Bonny Best, Earliana, Grothen's, Marglobe, Oxheart, John Baer, June Pink, Pritchard, Rutgers's, Wards Smooth Jumbo, Ponderosa, Yellow Pear35	1.00	1.80	12.50
SWEET POTATO. Ready May 1st to July 1st. Big Stem Jersey, Yellow Jersey, Nancy Hall, Yellow Nansemond25	.80	1.50	12.00

If you are a market gardener, using large quantities of seed, write us for special quotations.

IOWEALTH

KING OF ALL HYBRIDS

You Get ALL THIS

When You Plant IOWEALTH

- Corn you can feed. Iowealth is ONE hybrid that's bred for kernels with the soft, floury starch. Not a hard, flinty hybrid in the entire Iowealth series.
- Good yield. Official yield test records almost always show Iowealth at the top of the list.
- Drouth Resistance—Wind Resistance. Straight, strong stalks, together with roots that sink down eight feet, make Iowealth one of the most drouth and wind resistant of all hybrids.
- Easy Picking, by hand or machine. That means less labor costs, less time in the field.
- Disease Resistance—Gives you better grading, more profitable corn.

We stock four maturities of Iowealth Hybrid. S matures in about 90 days; A in about 100 days; AQ in 105 to 110 days; and No. 25 in 120 days. It is important to fit the maturity to your season as near as possible. The later maturing the deeper the kernel and heavier yield. When ordering use these Symbols. S—A—AQ—and No. 25.

2 Pounds	-----	\$0.50	} By mail postpaid
5 Pounds	-----	1.05	
10 Pounds	-----	1.85	

56 Lb. Bushel—Not prepaid, \$9.25 per bushel.

F. O. B. Grand Junction.

WESTERN COLORADO GROWN "MILE HIGH" HARDY STRAIN ALFALFA SEED

LADAK. A wilt-resistant variety, is slow to start in the spring, but it resists drought and produces a good yield of hay. Leafy and of high feeding value, and will hold a stand longer than other varieties.

COMMON. Deep-rooted. Excellent for hay; but must have a deep soil. Therefore, if you do not have over two and a half feet of good soil to water, shale, or gravel, we suggest that you use Grimm.

GRIMM. Has a spreading root and lives from surface soil. Will withstand severe freezing; does not winter kill; better adapted to extreme northern and high altitude growing.

MEEKER BALTIC. A distinct variety; same root system as the Grimm. Originated at Meeker, Colorado, on dry land. See Yellow Price Sheet for prices.

STRAWBERRY CLOVER

Western Colorado grown seed. It thrives on wet, seepy soil, even though it is crusted with alkali. Best suited for pasture; spreads from root and seed—a perennial plant. Requires 3 lbs. of seed per acre. For best results, sow in rows with garden seed planter. See Yellow Price Sheet for prices.

GRASS SEEDS

REED CANARY GRASS—Is one perennial grass that will thrive in marshy places, stands under water for weeks without injury, yields enormous tonnage of hay with feed value equal to wheat bran. Sow any time before June 20th at the rate of 10 to 12 pounds per acre, broadcast. It forms a sod rapidly through the spreading of underground roots. Makes your lowlands grow profitable crops.

CRESTED WHEAT GRASS (Standard or Forage Strain)—Is a drought-resistant, long-lived grass.

CRESTED WHEAT GRASS (Fairway Strain)—This differs from the above in that it does not grow quite as tall and is more leafy and under most conditions will produce as much hay per acre as the Standard Strain. The Fairway has more uses and can be used in lawns, fairways, boulevards, school yards, parks, farm lawns and in areas where water is not readily available.

PERENNIAL RYE GRASS—A very valuable variety for permanent pasture. Succeeds well on almost any soil, but is particularly adapted to moderately moist or irrigated lands. Sow 30 to 40 pounds per acre in spring.

BROME GRASS (Bromus Inermis)—Yields enormous crops of splendid hay, and affords early and abundant pasture.

MEADOW FESCUE, or ENGLISH BLUE GRASS—Of great value for permanent pasture and for hay. Does best on strong land.

PERMANENT PASTURE MIXTURE—We highly recommend the following ratio for a well balanced permanent pasture mixture: 30% Orchard Grass, 30% Prome Grass, 20% Perennial Rye Grass, 12% Timothy and 8% Yellow Blossom Sweet Clover. Sow 25 to 30 pounds per acre. Sow broadcast, cover lightly and keep wet until well started.

ORCHARD GRASS

Often sown with Alfalfa to give a stronger and better hay. It will stand drought or will do well in the shade. Orchard Grass gives a heavy tonnage in permanent pasture, furnishes the first green bite in the Spring and the last in the Fall.

SUDAN GRASS

One of the best catch crops to plant when late seeding is necessary. Can be cut every six weeks until frost. Frost kills it entirely. A real drought resister, renewing its growth immediately when rain comes. An enormous hay yielder and the hay can be fed in unlimited quantities without any danger to stock.

SOY BEANS

Soy Beans are valuable for hay, seed, or for soil improvement, are easy to grow and are valuable for soil too poor for other legumes. They withstand both drought and heat well, make a good emergency crop, as they can be sown late.

Soy Beans, as a hay crop, are higher in protein content than clover hay.

ILLINI—(110 days.) Is an early yellow variety, grows taller and a better yielder than most varieties.

EARLY BLACK WILSON—(120 days.) A very prolific variety. Average height on good land is about 3 feet. Considered the best hay variety.

See yellow price sheet for prices on all the above seeds, also for a complete list of all field seeds including Seed Wheat, Oats, Barley, Rye and Corn. Field Peas, Soy Beans, Kaffir Corn and all Sorghums.

Regret that space will not permit descriptions on all these items, however, you will find our stock complete.

Quality is protected on all these seeds by the MILE HIGH Brand. Perhaps you are familiar with our High Altitude Grown Seeds and know the results that can be expected from them.



CYCLONE SEED SOWER

The finest hand seeder known. Throws seed directly and evenly on the land. Can be set to sow any amount desired. Sows alfalfa, clover, grass or small grains very satisfactorily. Price each, \$2.75, postpaid.

PRICES ON HOTKAPS AND HOTENTS ARE NOT PREPAID



Germaco
Hotkaps
New Method of
Plant Protection

An individual hot-house for each plant; cost less than 1c per plant. One man can set 2000 to 3000 per day. Get your crop to market 20 days earlier. Hotkaps protect your

young plants from sun, wind, frost and insects.

Prices: 50 for 85c; 100 for \$1.60; 250 for \$3.25; 500 for \$5.95; 1000 for \$10.25; not prepaid. Shipping wt. 28 lbs. per 1000.

HOTKAP HOME GARDEN PKG.—25 Hotkaps with cardboard setter, 50c. Shipping weight, 2 lbs.

Pkg. of 100 Hotkaps, Garden Setter, \$2.35. Shipping wt. 5 lbs.
Pkg. of 250 Hotkaps, Garden Setter, \$4.10. Shipping wt. 9 lbs.

(Sorry, no more Steel Setters for Hotkaps). Very durable Fiber Setters that do the job. 20c each, not prepaid. Wt. 1 lb.

HOTENTS

LARGER, STRONGER, REINFORCED

Packed 500 to Pkg. Shipping weight, 35 lbs.

500 lots, \$6.85; 1000 lots, \$13.25; 50 for \$1.00; 100 for \$1.80; 250 for \$4.00. **HOTENT STEEL SETTER**, \$1.50 ea., not prepaid.

Add postage for Hotkaps and Hotents.

- 1 yd., 36 in. wide .45
- 3 yd., 36 in. wide 1.15
- 5 yd., 36 in. wide 1.80
- 10 yd., 36 in. wide 3.50
- 25 yd., 36 in. wide 8.75
- 50 yd., 36 in. wide 17.50

All prices postpaid.

BETTER Than GLASS
Makes the Sun
Work for You

Flex-o-Glass increases production, because it transmits the Ultra-Violet Rays.

It is used for poultry houses, hotbeds, porches, storm doors and windows. Weather-proof and Sun proof. Better, earlier plants, that bring highest market prices. More eggs, healthier and larger chicks.



FLEX-O-GLASS

We also stock
Window
Fabric
Class-
o-Net
Wyr-o-
Glass

Ask for
Samples
and
Prices.

KILL PLANT INSECTS

EVER GREEN GARDEN SPRAY

THE EASY WAY . . . simply dilute with water in accordance with directions and spray, hitting the insects to be controlled. Non-injurious when used as directed. Deadly to many common varieties of both chewing and sucking insects. Postpaid. 1 oz, 35c; 6 oz, \$1.00; 16 oz, \$2.15; until sold out; no more available.

PROTECT YOUR BABY CHICKS

By disinfecting their drinking water with Pratt's Chick Tablets—keeping the drinking water free from disease germs.

Small, 35c, Postpaid..
Makes 22 quarts.

Large, 70c, postpaid.
Makes 55 quarts.

PRATT'S POULTRY REGULATOR

Small, 45c, Postpaid.
Medium, 80c, Postpaid

Write for prices on larger quantities and other items.



NITRAGIN INOCULATION

It is very important to inoculate with Nitragin when planting on soil where the crop has not been previously produced. Results have been proven.

When ordering, state name of seed.

Alfalfa, All Clovers
Size Price
1 bu. ea. \$.50
2½ bu. ea. 1.00

PEAS (All Varieties)
VETCHES (All Var.)
1 2-3 bu. ea. .50

SOYBEANS, LIMA BEANS
Small (inoculates up to 120 lbs. seed) \$.30
5 bu. ea. .55

BEANS, String, Wax, Kidney
1 bu. ea. \$.35

GARDEN SIZE
Garden Peas, Sweet Peas and Beans
Enough for 6 lb. seed.
Retail price, ea. 10c.
All Prices Postpaid.

Prices on Gladioli Bulbs Are Postpaid

Plant groups of Gladiolus bulbs every two weeks from about April 15 to July 1 for bright masses of garden color plenty of cut flowers all summer. Plant bulbs 4 to 6 inches deep and 6 inches apart. Dig bulbs in fall, allow to dry, then store in dry, cool place. Protect from frost. Water by trench method.

DR. MOODY—Good large rosy lavender.

EARLY DAWN—Tall large geranium pink.

MAID OF ORLEANS—Tall white, cream throat.

BAGDAD—Excellent, tall smoky old rose.

BREAK OF DAY—Soft apple-blossom pink.

OLIVE GOODRICH—Creamy white with pink edge.

PICARDY—Popular buff pink.

DR. BENNETT—Popular bright red.

DEBONAIR—Tall pink cream throat.

GOLDEN CUP—Deep Golden yellow.

PELEGRINA—Best violet blue.

FLAMING METEOR—Beautiful large deep red.

ABOVE NAMED VARIETIES ALL NO. 1 CHOICE BULBS, 1¼-INCH IN DIAMETER AND LARGER.

Any of Above: 5c each; 12 for 50c.

NUMBER 1 CHOICE MIXED BULBS. This mixture is made up of many varieties blended together to give you a gorgeous array of colors from the lightest shades to the deepest of reds and blues. Single dozen, 45c; 50 bulbs for \$1.50; 100 bulbs for \$2.90. Postpaid.

DAHLIAS

We have grouped our Dahlias as to type of bloom and packed them in a collection of 6 bulbs in a box. Each variety labeled and with complete growing directions in each box.

Every collection is made up of select varieties and presents a full range of color which is sure to please.

No. A-1 The Art type of dahlia has semi-double blooms of large size, and resembles a hybrid perpetual rose bloom, fully opened. The most artistic type of dahlia.

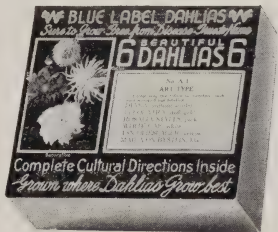
No. B-1 The Ball type of dahlia has fully double blooms, with closely quilled petals, and is one of the most desirable of all dahlias for cutting because of their uniform ball shape and long keeping qualities.

No. C-1 The Cactus type dahlia has loosely formed, fully double blooms with quilled and pointed petals. Very desirable for both garden and cut flowers purposes.

No. D-1 The decorative type of dahlia has fully double blooms with wide flat petals, and is the type most largely used for cut flower and exhibition purposes.

No. X-1, X-2, X-3. Assorted Dahlias composed of above kinds of Dahlias each collection is different.

Any of the above collections postpaid to you for only 72c for all six bulbs. Remember, at this price these bulbs cost you only 12c each.



No. HR1. HONOR ROLL DAHLIA ASSORTMENT.

5 Fancy A-1 Dahlias. The varieties included are all strictly A-1 Dahlias and have appeared on one or more honor rolls. Dahlias in this assortment are really worth 50c each but this collection of 5 is sold for \$1.50, postpaid.

FLOWERS

CULTURE

A good sandy loam soil supplemented with well rotted manure and a small portion of commercial fertilizer is the ideal soil for flowers. Flowers will always do better if watered from a small trench dug along the sides of the plant.

DO NOT LET THE GROUND DRY OUT OR CRUST.

The following symbols are used in connection with each item:

- A**—Annuals: The plants live and bloom one season only.
B—Biennial: The plants live two seasons, often blooming the first year when planted early.
P—Perennial: The plants usually live from year to year.
H—Hardy: Plants that are easily grown and resist average seasonal extremes of temperature.
H-H—Half-Hardy.
T—Tender.

Approximate height of each plant is also given.

FLOWERS BEST ADAPTED TO VARIOUS USES

For Cut Flowers	Petunia	Swan River Daisy
Antirrhinum (Snap Dragon)	Stock	Verbena
Aster	Sweet Peas	For Partial Shade
Calendula	Sweet William	Balsam
Candytuft		Campanula
Carnation	For Window Boxes	Centaurea
Sweet Sultan	Antirrhinum	Clarkia
Chrysanthemum	Geranium	Columbine
Clarkia	Morning Glory	Godetia
Columbine	Nasturtium	Pansy
Cosmos	Petunia	Sweet William
Gaillardia	Phlox	For Withstanding Drought
Gypsophila	Verbena	Candytuft
Marigold		Cosmos
Nasturtium	For Rock Gardens	Four O'Clock
Shasta Daisy	Alyssum	Hollyhock
Stock	Columbine	Petunia
Sweet Peas	Carnation	Portulacca
Zinnia	Campanula	Verbena
For Fragrance	Candytuft	Zinnia
Alyssum	Dianthus	For Climbing
Candytuft	Gypsophila	Cypress Vine
Carnation	Phlox	Morning Glory
Centaurea	Portulacca	

We offer on the following pages a list of worthwhile flowers that are grown from seed. You will enjoy a flower garden. Plant one.

For Better Gardening Get Our Victory Garden Booklet. 15c, Postpaid.

AFRICAN DAISY

807—(HA 12-In.) Showy annuals. Fine daisy-like blooms. Good for rock gardens, edgings and cutting. Mixed. Pkt, 5c.

AGERATUM (HA 8-In.)

815 Purple Perfection. Attractive border plant. Pkt, 5c.

ALYSSUM

822 Little Gem. (HA) Small white flowers completely cover the dwarf compact plants, which grow only 4 to 5 inches tall. Wonderful for edgings. Pkt, 5c.

823 Gold Dust. (P-12-In.) Brilliant golden yellow flowers borne so profusely as to hide the plants. Pkt, 5c.

824 Alyssum Violet Queen. (HA 4-In.) A new edging plant with a color peculiarly its own, being of a very pretty violet tint much deeper in color than the Alyssum Lilac Carpet offered previously, does not fade in hot weather. Has the usual honey-like odor of the white variety. Pkt, 5c.

BRACHYCOME

899—Swan River Daisy. (HA 12-In.) Blooms nearly all summer. Fine for edgings, rock gardens or pots. Free flowering. Pkt, 5c.

BACHELOR'S BUTTON (HA 2 Ft.)

878 Red Boy. Deep glowing red. Pkt, 5c.

879 Blue Boy. True cornflower blue. Pkt, 5c.

880 Finest Mixed. (HA 2 Ft.) Pkt, 5c.

BALSAM

(HA 18-In.) Double flowers set thickly along the stems. Good border.

889 Camellia Flowered. Mixed. Pkt, 5c.

SCARLET RUNNER BEANS

895 Tall climber, large scarlet blossoms. (HA 8-Ft.) Pkt, 5c; 1/2 lb, 35c.

ASTERS

If YOU should have any trouble raising Asters—TRY OUR WILT RESISTANT STRAINS. Perhaps your soil is infested with aster wilt.

Early Giants

The finest large flowered heavy stemmed asters yet developed. Flowers are of the large Giants of California type. Plants 1½ ft. tall, with strong, heavy stems. Come into flower four to six weeks earlier than Giants of California.

- 833 Light Blue.
- 834 Peach Blossom. Opens white, flushes, lavender pink.
- 835 Rose Marie. Rich rose.

Above Packets, 10c.



Improved Crego

Improved Giant Crego

(HA; 2 ft.) Very large, fully double flowers, 4 to 5 in. across, with long ribbon-like petals gracefully curled and twisted, giving them a lovely fluffy appearance. The plants are strong growing of branching habit. Long stemmed; fine for cutting.

- 839 Crimson. 841 Light blue. £43 Purple.
- 840 Shell Pink. 842 White.

Above Packets, 5c.

- 847 Mixed. Pkt, 5c; ⅛ oz, 20c; ¼ oz, 30c.

Queen of the Market

(HA; 20 in.) The earliest Aster, producing a profusion of fine blooms in early August.

- 854 Rose. 853 Purple.
- 852 Crimson. 858 Mixed.
- 855 Lavender.

Above Packets, 5c.

Mixed Aster

- 865 All Double Varieties Mixed, wilt resistant. (H A). Pkt, 5c; ⅛ oz, 15c; ¼ oz, 25c.

CALENDULA

(H A; 18 in.) Keep the flowers cut for continuous blooming. Make a late sowing in early July for flowers in cool weather; they stand light frosts.



Calendula Orange Shaggy

- 910 Orange King. Special tall cutting strain. Pkt, 5c.
- 912 Orange Shaggy. Fringed, shaggy appearance. Pkt, 5c.
- 927 Florists' Special Mixture. Large flowered, long stemmed varieties. Pkt, 5c.

CALIFORNIA POPPIES

(A; 12-15 in.) Plants of low spreading growth with finely cut silvery foliage. Do well in any well drained, loose soil and sunny position. Blooms early and continues until frost.

- 932 Aurantiaca. Bright orange. The true California Poppy. Pkt, 5c.
- 937 Brilliant Mixed. All the brightest colors. Pkt, 5c.

CALLIOPSIS

- 929 Golden Crown. (H A). A rich orange-yellow a third larger than Golden Wave. It has a pleasing fragrance and is nice for cutting, with 12-inch wiry stems. Pkt, 5c.

CANDYTUFT (H A—1 Ft.)

For beds, borders, edgings, rock gardens and cutting. Comes into flower quickly. For a continuous display, make several sowings 2 to 3 weeks apart.

- 948 Annual Varieties. Good mixed. Pkt, 5c.

CANTERBURY BELLS (H A—2 Ft.)

- 950 A new annual Canterbury Bell which blooms from seed in less than six months. Plants 2 to 2½ ft., bearing 6 to 8 flower spikes. Pkt, 5c.

CASTOR OIL BEAN—RICINUS (A—10 Ft.)

- 956 Mixed. A wonderful assortment of finest varieties with large leaves in green, red, and bronze. Pkt, 5c.



BAIT-M For the control of cut worms, sow bugs, and slugs that eat off tender seedlings as they come through the ground.

1 Lb. Package, 35c. 4 Lb. Package, \$1. Postpaid
ORDER WHEN ORDERING SEED AND HAVE IT ON HAND.

CLARKIA (H A—2 Ft.)

960 The lovely Clarkias are effective in the garden or as cut flowers. Produce great spikes of double and semi-double flowers in the daintiest colors. Pkt, 5c.

COCKSCOMB (A)

The name Cockscomb is derived from the resemblance of the flower head. The crested type thrives in light soil. Nice for edgings, borders or pots. Easily dried for winter use.

964 Dwarf Mixed. 8 to 10 inches. Pkt, 5c.

COSMOS (H A—4 Ft.)

While the early varieties begin blooming in July, the Cosmos reaches the height of its beauty in the autumn.

972 Early Klondyke. Orange Flare.

Pure, vivid orange blooms. Pkt, 5c.

973 Sensation Dazzler. A luscious shade of rich deep velvety crimson maroon. Immense flowers, 4 to 5 inches in diameter. Ideal for cutting. Pkt, 10c.

976 Early Double Crested. Form a perfect bush, massed with blooms of good size on long stems. Pkt, 10c.

977 Early Flowering Mammoth Mixed. All colors. Pkt, 5c.

978 Giant Late Flowering. Mixed. Pkt, 5c.

ANNUAL CHRYSANTHEMUM**(H A—2 Ft.)**

Gorgeous flowers on long, stiff stems. Will produce freely until frost.

958 Double. Mixed colors. Pkt, 5c.



Early Klondyke,
Orange Flare

CARDINAL CLIMBER (A—15 Ft.)

952 Graceful, quick-growing climber with cardinal-scarlet blooms, 1 to 1½ in. across. Rich, glossy dark green foliage. Pkt, 5c.

CARNATION (P—20 In.)

This popular hardy Carnation blooms five months from sowing and continues thruout the season. Chabauds, Giant double strain.

955 Finest Mixed. Pkt, 5c.

COLUMBINE (P—18 In.)

Beautiful spring-blooming plants of graceful, airy habit. They succeed in sun or half-shade and in any rich soil.

968 Rocky Mountain. State flower of Colorado. Pkt, 10c.

969 Dobbies Imperial Hybrids. Finest mixed. Pkt, 10c.

CUCUMBER VINE (A—10 Ft.)

971 Quickest growing climber on our list. It is thickly dotted over with white fragrant flowers. Pkt, 5c.

CYPRESS VINE (A—10 Ft.)

979 Cypress Vine. Scarlet and white, star-shaped blossoms, finely cut foliage. Pkt, 5c.

DAHLIA SEED (P—3 Ft.)

It is easy, most interesting and fascinating to grow dahlias from seed and enjoy the surprise of new colors and forms. If the seed is started early, plants will bloom the same season.

980 Double Fine Mixed. Pkt, 10c.

DELPHINIUM (P—4-6 Ft.)

Modern hybrid Delphiniums have become the dominant flowers in the perennial border of late June. If the bloom is cut down to the ground, a second flowering spike is produced.

984 Single Mixed. Medium tall hybrids. Pkt, 5c.

985 Dreer's De Luxe Hybrids. Choice mixed. Pkt, 10c.

DAISIES (B—6 In.)

For the best flowers, we recommend sowing seed each year and treating as an annual. Prefers moist but well-drained soil.

987 English Double. Low growing. Pkt, 10c.



Helichrysum

ORNAMENTAL GOURDS (A—10 Ft.)

Gourd fruits make attractive decorations at harvest festivals. Bird houses, dippers, bowls, and toys are made of others.

1008 Large and Small Sorts, mixed. Pkt, 5c.

EVERLASTING FLOWERS**(H A—2½ Ft.)**

Straw Flowers should be cut before the centers open, and be hung upside down in a cool, dark place to dry.

989 Helichrysum. Large compact flowers. A very nice blend of colors for winter bouquets. Pkt, 5c.

990 Everlasting Flowers. All varieties mixed. Pkt, 5c.

FOUR O'CLOCK (H A—20 In.)

Showy summer and fall blooming plants that do well everywhere.

995 All colors, mixed. Pkt, 5c.

FORGET-ME-NOT (A—6 In.)

Will bloom from May until frost and prefer cool, moist loam and half-shade. For beds, borders and rock gardens.

997 Indigo Blue Compacta. Pkt, 5c.

GEUM (P)

Dainty double blooms from June to September. Needs protection in cold sections, or treat as annuals by starting seed indoors. 1½ to 2 ft.

1002 Mrs. Bradshaw. Large, double, fiery scarlet flowers. Pkt, 10c.

GODETIA (A—12 In.)

Bushy plants with masses of large, colorful blooms during the summer and fall; suited for beds, borders and cutting. Thrive best in cool, moist, half-shady situation.

1006 Dwarf Double Azalea Flowered. Finest mixed. Pkt, 5c.

1007 Dwarf Single. Exquisite mixed. A very showy plant. Pkt, 5c.

GYPSOPHILA—BABY'S BREATH

Graceful plants of light fairy-like growth. Much in demand for cutting and combining with other flowers for bouquets and vases. Use dry in winter bouquet.

1010 London Market Improved. White, extremely large flowers. (Annual, 1½ ft.) Pkt, 5c.

1011 Carminea. Deep rose. (Annual, 1½ ft.) Pkt, 5c.

1012 Paniculata Single. White. (Perennial, 3½ ft.) Pkt, 5c.

HIBISCUS (P—3-5 Ft.)

1015 In late summer, when perennials are few, well established plants bear their beautiful single flowers for several weeks. Pkt, 5c.

HOLLYHOCKS (H P—5-8 Ft.)

1016 Allegheny Mammoth Mixed. Single. Pkt, 5c.

1022 Prize Double Mixture. Pkt, 5c.

HYACINTH BEANS (A—10 Ft.)

1025 If you have a wire fence which you want covered, we know of no plant which would be more decorative than this. The flowers stand upright. Pkt, 5c.

LARKSPUR—GIANT IMPERIAL

(A—4 ft.) These Larkspurs are ideal for cutting, as the flower stems branch from the ground. Double flowers are compactly placed on the long upright stems.

1032 Daintiness. Lavender.

1034 Blue Spire. Deep violet.

1033 Carmine King.

1035 Mixed.

Above Packets, 5c.

LINUM (A—24 In.)

1037 Crimson Flax. Brilliantly colored summer annuals, glowing crimson-rose. Pkt, 5c.

LOBELIA (H A—4 In.)

Highly desirable for edgings, ribbon bedding and garden decoration as well as for pot culture.

1038 Crystal Palace. Dark blue, Bronze foliage. Pkt, 5c.

MEXICAN TULIP POPPY

1024 Sunlite. (A—1½ ft.) Semi-double, clear canary yellow blooms with red stamen. The extra rows of short petals are on the outside instead of the inside of the bloom. The blooms, cut when first open, often last a week in the house. Pkt, 5c.

MEXICAN FIRE BUSH**(H A—2 Ft.)**

1065 Symmetrical oval plants, resembling an ornamental evergreen. Fine for hedges. Turns carmine in fall. Pkt, 5c.

MIGNONETTE (A—1 Ft.)

Grown for its charming fragrance. Excellent for cutting.

1066 Special Mixture. All Midget varieties. Pkt, 5c.

MOONFLOWER VINE (A—15 Ft.)

1069 Covered with large flowers every evening and on cloudy days. Finest mixed. Pkt, 5c.



Larkspur
Giant Imperial



Sunlite

MARIGOLD (H A)

A wealth of color in late summer and fall, unequalled by any other flower. Easy to grow in ordinary garden loam and a sunny location.

- 1044 Orange Supreme. Deep orange. (2½ ft.) Pkt, 5c.
 1045 Yellow Supreme. Creamy lemon yellow. Pkt, 5c.
 1047 Tall Varieties. Mixed. (3 ft.) Pkt, 5c; ¼ oz, 15c; ¼ oz, 25c.
 1048 Mission Giant Yellowstone. Large, double, incurved chrysanthemum-like, clear golden yellow flowers, 2½ in. across, freely borne on 2 ft. vigorous growing plants from late summer until frost. Pkt, 10c.
 1049 Sunset Giant. Rich mixture, (3 ft.) Pkts, 5c.
 1050 Pot O' Gold. A mass of intense dazzling gold on compact growing plants. The 4- to 4½-inch flowers of the gigantea formation are freely borne on 12- to 15-inch plants. 100 per cent double; a garden favorite for showiness, fragrance and exceptional size. Pkt, 10.
 1054 Dwarf Varieties. Mixed (1½ ft.) Pkts, 5c; ¼ oz, 15c; ¼ oz, 25c.
 1057 Harmony Hybrids. New strains in the popular crested center type. 12- to 14-inch plants, with 1¾-inch flowers in striking color combinations. 100 per cent double. Pkt, 5c.
 1060 Butterball. Bronze Medal Winner, All-America Selections. Small, canary-yellow, scabiosa-like flowers, 1¼ in. across, cover the plants which grow about 8 in. tall. Pkt, 5c.
 1061 Sunkist. All-America Silver Medal Winner. Plants grow 6 to 8 in. high and are covered from early in the summer until frost with attractive, round double flowers, 1½ to 2 in. across, of a deep orange color. Neat, compact plants. Pkt, 5c.



Sunset Giants

MORNING GLORIES (A—15 Ft.)

Easily raised, quick growing climbers succeeding in any soil and location. Fine for trellises, arbors, porches and poles. Free and continuous blooming.

- 1073 Double Rose Marie. Double, deep rose flowers. Early and free-blooming. Pkt, 5c.
 1074 Clarke's Earliest Heavenly Blue Morning Glory. Sky blue, shading golden yellow in throat. Pkt, 5c.
 1079 Extra Fine Mixed. Pkt, 5c.

NIGELLA—LOVE-IN-A-MIST (A—18 In.)

- 1107 One of our prettiest old-fashioned annuals with attractive double flowers. Mixed. Pkt, 5c.

NASTURTIUM (H A)

Nasturtiums will really grow on soils incapable of supporting any other plants, and are most useful on dry, sandy, or gravelly banks.

Nasturtium
Gleam Hybrids

1086 Scarlet Gleam. Sweet scented double. Pkt, 5c; oz, 25c.

1085 Golden Gleam. Sweet scented double. Pkt, 5c; oz, 25c.

1090 Gleam Hybrid. Mixed colors. Pkt, 5c; oz, 20c; ¼ lb, 65c.

1094 Dwarf Single. Mixed colors. Pkt, 5c; oz, 20c; ¼ lb, 65c.

1100 Gem or Globe Dwarf Double. More compact than Gleam types. Same fragrant double flowers. Pkt, 5c; oz, 25c.

1095 Tall or Climbing. Pkt, 5c; oz, 20c; ¼ lb, 65c.

NEMOPHILA—BABY BLUE EYES (A)

- 1102 Quick grower; early bloomer. Charming for edgings and rock garden. 6 to 8 in. Pkt, 5c.

NIEREMBERGIA (H-H, P)

- 1160 Purple Robe. In the short time it has been on the market, has certainly proved itself a popular rockery and edging plant. The compact plants are extremely free flowering. The small, cup-like blooms of deep violet retain their rich coloring throughout the heat of summer. For best results, start seeds in flats. Will bloom about fifteen weeks from sowing. Pkt, 15c.

PANSIES (H A—6 In.)

Our Pansy seeds are high altitude, Colorado grown. Selected from plants of outstanding size and bloom.

Keep flowers picked during the summer and you will get a nice lot of flowers again in the fall. For earliest blooms, start seed indoors.

- 1109 Mile High Giant. Super Swiss mixture. Pkt, 20c.

- 1112 Large Flowering. Finest mixed. Pkt, 10c.

PETUNIA (H A—18 In.)

In dry season or wet, the petunia is the most adaptable, long flowering and colorful of the garden annuals.

- 1116 **Hollywood Star.** Unique shaped flowers having five-pointed star-shaped petals which are deep rose with golden yellow throat. Early and free flowering. Pkt, 5c.
 1117 **General Dodds.** Blood red. Pkt, 5c.
 1118 **Howard's Star.** Reddish purple, white star. Pkt, 5c.
 1119 **Violocea.** Deep violet. Pkt, 10c.
 1120 **Heavenly Blue.** Blooms are a rich light blue and cover the compact plants. Pkt, 10c.
 1121 **Radiance.** Rich cerise-rose with enough underlying salmon to intensify its brilliance; all in lovely contrast to the brown veined golden yellow throat. Pkts, 10c.
 1124 **Large Flowered Bedding (Balcony).** Mixed. Pkt, 10c.
 1127 **Ruffled Monsters.** Half dwarf type of erect and robust habit. The flowers are very large ruffled, with open shallow throats. The colors are mostly the desirable red and dark shades, richly marked and veined. Pkt, 20c.
 1123 **Burgundy.** Rich wine red, contrasting white throat. Very large, single. Pkt, 15c.
 1126 **Theodosia.** Largest fringed rose, gold throat. Pkt, 20c.
 1130 **Balcony Hybrids.** Mixed. Pkt, 5c.
 1132 **Double Giants of California.** An improved strain of Double Petunia. About 80 per cent of the blooms will come double from seed and the balance will be choice large single flowers, mostly ruffled. The weaker seedlings should be carefully saved, as these invariably produce the best double flowers. About 200 seeds per packet. Pkt, 50c.

PHLOX (H A—12 In.)

One of the easiest grown annuals. No other flower can surpass their brilliant colorings. Fine for bedding, borders, edgings and cutting.

- 1133 **Art Shades.** Very large flowered new strain, all with large light eye. Pkt, 10c.
 1138 **Finest Mixed.** From named varieties. Pkt, 10c.

PINKS (H A—12 In.)

Brilliantly colored flowers for beds, borders, rockeries, edgings and cutting

- 1142—**Laciniatus.** Double mixed. Double, fringed and lacinated flowers. Pkt, 5c.
 1143 **Single and Double Mixed.** Pkt, 5c.

PINKS (P—15 In.)

- 1141 **Clove or Grass Pinks.** The old fashioned Garden Pink. Double and single flowers. Mixed colors. Pkt, 10c.

PORTULACA—MOSS ROSE (H A)

Forms a beautiful floral carpet, about 6 in. high, even in dry, sunny places.

- 1168 **Single.** Pkt, 5c. 1169 **Double.** Pkt, 10c.

PAINTED DAISY—May-June (P—18. In.)

They are wonderful for cutting. The fern-like foliage plants are beautiful even when not in bloom.

- 1171 **Giant Single Mixed.** Pkt, 10c.

POPPIES—PERENNIAL

The colorful beauty of perennial poppies assures them a place in every garden. They are of easy culture, slightly moist but well-drained soil, and in full sun. The seed is best sown where the plants are to bloom. Poppies for cut flowers should be treated to make the blooms last longer. After cutting, stems should be burned or dipped in hot water.

- 1147 **Giant Art Shades.** This mixture is outstanding. Flowers are beautifully fluted and soft-textured in lovely pastel shades of apricot, cream, gold, pink, white and shades of rose. Plants have strong wiry stems up to 30 inches tall and bloom heavily. Pkt, 15c.
 1148 **Iceland Poppy.** Single mixed. (15 in.) Pkt, 5c.
 1157 **Oriental Mixed.** (3 ft.) Pkt, 10c.

POPPIES—ANNUAL

Sow them early—since they defy frosts—and where they are to bloom, as they dislike transplanting.

- 1159 **American Legion.** Brilliant scarlet, white maltese cross. (2 ft.) Pkt, 5c.
 1160 **Single Shirley.** Finest mixed. (2 Ft.) Pkt, 5c.
 1161 **Double Begonia Flowered Sweet Briar** is a delightful shade of deep rose pink. Pkt, 5c.
 1162 **Double Begonia Flowered Mixed.** Flowers resemble the double tuberous-rooted Begonia in shape. Pkt, 5c.

ROCK GARDEN MIXTURES

- 1175 **Annual Finest Mixed.** Pkt, 5c.

SALPIGLOSSIS (A—30 In.)

One of the easiest of annuals to grow, the Salpiglossis is rich in deep color tones rare in the floral world. Sow in the full sun in fairly rich soil as early as possible, and preferably in the place where it is to grow, to avoid transplanting. 1179 **Mixed Colors.** Pkt, 5c.



Salpiglossis

SCABIOSA—MOURNING BRIDE (A—3 Ft.)

Does well in different kinds of soil. Blooms from midsummer until frost if flowers are not allowed to go to seed. Lasts well and is one of the nicest flowers for cutting.

1185 Giant Flowered Hybrids Mixed. Large flowers, unusual colors, ball shaped. Pkt, 5c.

SCHIZANTHUS—BUTTERFLY FLOWER (A—1½ Ft.)

1186 Beautiful bushy plants with finely lacinated foliage and hundreds of butterfly-like blooms. For beds, borders and pot culture. Quick to flower. Finest mixed. Pkt, 10c.

SNAPDRAGON—RUST PROOF (2½ Ft.)

Snapdragons have always been universal favorites for color in the garden, and as cut flowers. Of easiest culture, succeeding in full sun or semi-shade. The gorgeous flowers are freely produced for several months. If you have found Snapdragons difficult to grow, rust is probably responsible. Rust is a widespread disease which discolors the leaves and saps the vitality. Growing the Rust-proof strain, difficulties disappear. Seeds germinate better; plants are more vigorous, the foliage clean, flowers large and of fine color and the flowering season prolonged.

1194 Finest Mixed. Pkt, 5c.

1199 Super Majestic. Finest mixed. Pkt, 10c.



Stocks Ten Weeks

STOCKS, ANNUAL

Heavy spikes of fine, double, fragrant flowers, in a wide range of soft and distinct shades. Fine for bedding, borders and cutting. Start seeds early indoors. Do best in rich, well-limed soil and in cool localities.

1205 Early Giant Imperial. (26 in.)

Plants of branching habit, double flowers. Mixed. Pkt, 10c.

1207 Dwarf Ten Weeks. About 12 in. high. Pkt, 5c.

SWEET PEAS (H A)

Giant Spencer Varieties

- | | |
|---------------------------------------|--|
| 1212 Capri. Clear, silver blue. | 1217 Prince of Orange. Best deep orange. |
| 1213 Gigantic. Best white. | 1218 Welcome. Dazzling scarlet. |
| 1214 Highlander. Fine clear lavender. | 1219 Warrior. Dark maroon |
| 1215 Pinkie. Large rose pink. | 1220 Bonnie Briar. Large rose pink. |
| 1216 Olympia. Rich purple. | |

Above Packets, 5c.

1228 Mile High Fantasy Mixed. Made up of the choice large flowering Spencer varieties that are heavily veined and mottled. Pkt, 5c; oz, 25c.

1230 Giant Spencer. Pkt, 5c; oz, 20c.

1234 Early Flowering Spencer Mixture. Pkt, 5c; oz, 30c.

Perennial Sweet Peas

1235 Very decorative climbing vines of the Pea family for growing on fences, trellis, etc., and for cutting. Blooms all summer, if seed pods are removed. Finest mixed. Pkt, 5c.

SWEET SULTAN (A—2½ Ft.)

Most desirable for garden decoration and cutting. They bloom freely for many weeks during the summer; succeed best in rich, well-drained soil. The large, long-stemmed, sweet-scented flowers are exquisitely fringed and most graceful in appearance. Plants do well in full sun.

1237—Giant Sweet Sultan. All colors mixed. Pkt, 5c.

SWEET WILLIAM (B—1½ Ft.)

Old garden favorites with large, showy flower-heads composed of numerous good-sized individual blooms.

1240—Single. Finest mixed. Pkt, 5c.

1241 Double. Finest mixed. Pkt, 5c.

VERBENA (H A—8 In.)

These are colorful annuals for some sunny spot in the border. In bloom continuously. They make gay bouquets for table decorations. Do not sow the seed outdoors until the soil gets warm. May also be started indoors to advantage. Spreads to 2 feet across.

1248 Lucifer. Brilliant scarlet. Pkt, 5c.

1249 Purple Mantle, White Eye. Pkt, 5c.

1250 Finest Mixed. Balanced mixture giant flowers. Pkt, 5c.



WE QUOTE TODAY'S MARKET



Complying with the provisions of the Colorado Sales Tax, all orders from Colorado must add to remittance 1 cent on all orders over 9 cents up to 59 cents; 2 cents over 59 cents up to \$1.09, and 1 cent for each additional 50 cents.

If you remit by check, please allow for exchange.

February 1, 1944.

All items subject market change. If delayed in ordering, please send for new price list.

All items in one-pound lots are prepaid prices. All other prices are quoted F.O.B. Grand Junction, Colorado, and transportation charges must be allowed unless shipped by freight or express collect at your station. Bags are weighed in on all items without extra charge.

BUY EARLY this year and avoid disappointment, as several items are very short and prices are advancing.

—NEAL.

MEEKER BALTIC TYPE ALFALFA—Dove Creek dry land grown. We wish to call your attention to the reasonable price at which we are quoting this fine quality seed. This is extremely hardy and frost resistant, and should be the choice of the extreme northern and high altitude grower.

ALFALFA	
COLORADO MOUNTAIN ALFALFA—	
	Postpaid Per Lb. 100 Lbs.
Mile High (Extra Fancy).....	\$0.50 \$46.90
Mountaineer.....	.50 43.90
Fair Special—Lot No. 2.....	.20 12.90
High Altitude, Dry Land Grown Common.....	.50 47.90
Meeker Baltic Type.....	.50 47.90
Grimm Type Mile High.....	.50 47.90
Ladak Type.....	.50 47.90

CLOVERS	
SWEET CLOVER, WHITE— (Biennial)	
Mile High (Hulled).....	Ask for prices
SWEET CLOVER, HUBAM— (Annual)	
Mile High (Hulled).....	Ask for prices
SWEET CLOVER, YELLOW— (Biennial)	
Mile High (Hulled).....	.25 15.75
CLOVER, MEDIUM RED—	
Mile High.....	.45 39.50
Mountaineer.....	.45 37.00
CLOVER, MAMMOTH RED—	
Mile High.....	.45 41.00
Mountaineer.....	.45 39.50
CLOVER, WHITE DUTCH—	
Mile High.....	1.00 85.00
CLOVER, ALSIKE—	
Mile High.....	.50 40.50
CLOVER, STRAWBERRY—	
1 to 4 Pounds.....	85c per Lb. Postpaid
5 Pounds or Over.....	80c per Lb. Postpaid.
Ask for prices on large quantities.	

GRASSES	
ALSIKE AND TIMOTHY MIXTURE—20% Alsike	
Mile High.....	.25 17.00
Mountaineer, 14% Alsike.....	.25 16.00
MEADOW FESCUE (English Blue)—	
Mile High.....	.40 32.00
KENTUCKY BLUE GRASS—	
21-lb. seed.....	.50 40.00
24-lb. seed.....	.55 43.00
28-lb. seed.....	.60 50.00
LAWN GRASS MIXTURE—	
Mile High.....	.60 45.00
LESPEDEZA.....	.25 17.00
BROME GRASS—	
Mile High.....	.30 20.00
ORCHARD GRASS—	
Mile High.....	.50 42.00
RED TOP—	
Mile High.....	.30 19.00
SUDAN GRASS—	
Mile High.....	.25 15.00
TIMOTHY—	
Mile High.....	.20 11.50
CRESTED WHEAT GRASS—	
Fairway Strain.....	.30 20.00
CRESTED WHEAT GRASS—	
Standard Strain.....	.30 19.50
BULBOUS BLUE GRASS.....	
	.30 21.00

	Postpaid Per Lb.	Not Prepaid 100 Lbs.
WESTERN WHEAT GRASS.....	\$0.35	\$27.00
DOMESTIC RYE GRASS.....	.25	15.00
PERENNIAL RYE GRASS.....	.35	24.50
REED CANARY GRASS.....	.45	36.00
PERMANENT PASTURE MIXTURES—		
Special, Irrigated.....	.35	25.00
Without Sweet Clover.....	.35	25.00
Dry Light Soil.....	.35	25.00
High Altitude.....	.35	25.00

BEANS	
Improved Navy.....	.20 7.75
Pinto.....	.20 7.50

FORAGE PLANTS	
FETERITA.....	Ask for Prices
HEGARI.....	
KAFFIR CORN—	
Dwarf Black Hull, White.....	
MILO MAIZE, Yellow.....	
GROHOMA.....	
ATLAS SORGO TYPE.....	
COES SORGO TYPE.....	
SUGAR CANE—	
Minnesota Black Amber.....	
Texas Ribbon.....	Ask for Prices
Honey Drip.....	
MILLET—	
Jaapanese, or Billion Dollar Grass.....	Ask for Prices
Golden, or German.....	
Siberian, or Russian.....	
Common.....	
Hog, or Broom Corn.....	Ask for Prices
Proso.....	
RAPE, DWARF ESSEX.....	.30 16.00
VETCH—	
Hairy or Winter.....	.25 18.00
SOY BEANS—	
Early Yellow, for feed or oil.....	Ask for prices
Wilson (Black), for hay.....	Ask for prices
PEAS—	
San Luis Valley.....	.20 14.00
Black Eyed Peas.....	.20 14.00

ALFALFA SEED SPECIAL LOTS	
We have some lots of alfalfa that do not quite make our standard grades that can be sold to save you money. Ask us for samples, prices, purity, and germination on these odd lots of seed stating the amount you are interested in. Thank you.	

RED CLOVER	
At a saving. Could you use some Red Clover containing a small quantity of yellow sweet clover, at reduced prices. We have other lots a little off color. Ask us for samples, prices, purity, and germination on these odd lots of Red Clover stating quantity you are interested in. Thank you.	

GRAINS	
	Postpaid Per Lb. 100 Lbs.
OATS—	
Abundance.....	\$0.20 \$3.75
Colorado No. 37.....	.20 3.75
Swedish Select.....	.20 3.75
BARLEY—Spring	
White Hulless or Bald.....	Ask for prices
Colless.....	Ask for prices
Lico.....	.20 3.75
Trebi.....	.20 3.75
RYE—	
Michels Hybrid Rye.....	.20 11.00
Rosen, or Winter.....	Ask for prices
Spring.....	Ask for prices
WHEAT—	
Dicklow.....	.20 3.40
Thatcher.....	.20 3.50
Early Bart.....	.20 3.40

CORN (Selected and Recleaned)	
Australian White Flint.....	6.00
Cedaredge Special.....	6.00
Crawford Yellow Dent.....	6.00
Swadley Dent.....	6.00
Minnesota No. 13.....	4.75
Iowa Gold Mine.....	5.50
Leaming Yellow Dent.....	4.75
Reid's Yellow Dent.....	4.75
Rainbow Flint.....	Ask for prices
Colorado No. 13 High Altitude.....	6.00

HYBRID CORN
See catalog page 14 for description.
We stock four maturities of Iowahead Hybrid. "S" matures in about 90 days; "A" in about 100 days; "AQ" in 105 to 110 days; and "No. 25" in 120 days. It is important to fit the maturity to your season as near as possible. The later maturing the deeper the kernel and heavier yield. When ordering use these symbols. "S"—"A"—"AQ"—and "No. 25."

PRICES ON HYBRID CORN	
2 Lbs.	\$0.50
5 Lbs.	1.10
10 Lbs.	1.85
65 Lb. bushel—Not prepaid, \$9.25 per bushel, F. O. B. Grand Junction.	

SOLID ONION SETS—FIRST QUALITY	
	32-Lb. Bu.
Bottom Sets, White.....	\$3.20 \$6.00
Bottom Sets, Yellow.....	3.20 6.00
(Prices on Sets not Prepaid)	

FROM -----

STREET OR R. F. D. NO. -----

P. O. -----



THE MILE HIGH SEED CO.

Home of Mile High Seeds

Grand Junction,

Colorado

*—The Seeds that have made
Western Colorado Famous!*



SALVA—SCARLET SAGE (H A; 24 In.)

1180 The Scarlet Sage is one of the most brilliant bedding plants; blooms from early summer until frost. Popular for beds, borders, edgings and pot culture, may be used for cutting. Packets, 10c.

SHASTA DAISY (P; 2½ Ft.)

Suitable for borders and cut flowers, doing best in moist, well-drained locations. Extremely hardy; easy to grow.

1187 Shasta Daisy Conqueror. Flowers very large, pure white, stems 2½ ft. Pkt, 5c.

SNOW ON THE MOUNTAIN (H A; 3 Ft.)

1200 Colorful foliage plants which add beauty to the tall border. Fine for foundation plantings and groups, doing best in a sunny location. Easily grown. Bright green leaves veined and attractively margined white; topmost leaves almost all white. Pkt, 5c.

VIOLA (P; 6 In.)

1254 Smaller than pansies but have a longer blooming season. Blooms first year from seed. Mixed. Packets, 10c.

VINCA ROSEA (Periwinkle) (B)

1255 Ornamental free-blooming plants, with dark laurel-like foliage and handsome pink and white flowers. See germinates slowly but if sown early plants will bloom the first summer. They can be taken up in the fall, potted, and kept in bloom for the winter. (1 ft.) Mixed. Pkt, 5c.

ANNUAL WALLFLOWER (15 In)

1257 Lovely sweet-scented flowers, their oriental colorings of red, brown, mahogany and yellows being most effective in the garden or when cut. Easily grown anywhere. Unusual colors, always admired. Finest mixed. Pkt, 5c.

ZINNIAS—DAHLIA FLOWERED (H A; 3 Ft.)

The broad petals are closely imbricated, sometimes seemingly almost to be piled one upon the other; the flowers often 4 inches in depth and 6 inches in diameter, resembling Show Dahlias.

1260 Crimson Monarch. Deep crimson.

1261 Polar Bear. Large creamy white.

1262 Dream. Deep rosy lavender.

1263 Illumination. Deep rose.

1264 Purple Prince. Deep purple.

1265 Canary Bird. Rich canary yellow.

1267 Luminosa. Bright deep pink.

1268 Oriole. Orange and gold bicolor.

Above packets, 5c.

1270 Mixed. Many varieties.

Packets, 5c; ½ oz, 20c; 1 oz, 35c.



Zinnia Dahlia
Flowered Mixed

ZINNIA SUPER CROWN O'GOLD PASTEL TINTS

1274 This is the very finest large flowered Zinnia introduction since the original Dahlia Flowered. Flowers are large and showy, 5 to 5½ inches in diameter. Strictly a mixture of pastel tints, it contains a wide range of pastel shades, including soft yellow, old gold, light pink, apricot pink, various shades of salmon, peach and buff, lively cerise salmon, as well as pure white and cream. All of the flowers carry the characteristic Crown O'Gold markings, that is, each petal of the flower is overlaid at the base with a deep golden yellow while carrying out the individual flower color at the tip. Plants are strong and robust, growing about 3 feet tall. Flowers are borne profusely throughout the season. Pkt, 5c.

LILLIPUT ZINNIAS

The small, pompon-like flowers of Lilliput Zinnias are exquisite and most appealing. Plants are dwarf, bushy and very branching: 12 to 18 in. tall, and literally covered with double blooms, 1 to 1½ in. across. Nice as edgings to other plants or taller growing zinnias.

1282 Finest Mixed, from named varieties.

Pkt, 5c; ¼ oz, 20c; 1 oz, 60c.

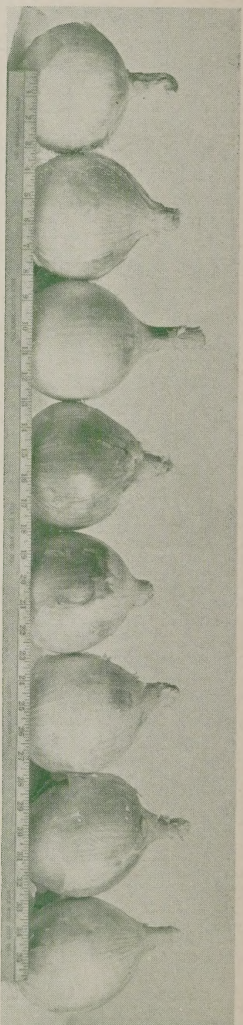
NEW CUPID ZINNIAS

1288 Compact plants, about 1 ft. tall, consist of a large number of slender branches, each bearing a double flower which hardly exceeds 1 in. in diameter. Plants are very floriferous; a mass of color through the summer and fall; especially adapted for borders, bedding and rock gardens and as miniature cut flowers. They are as easy to grow as any zinnia. Finest mixed. Pkt, 5c.

CRESTED ZINNIA

1275 Plants. 2½ ft. On a single corona of outside petals stands a semi-globular crown with a large number of small florets giving a most interesting effect, similar in form to the flowers of the Scabiosa. Mixed colors. Pkt, 5c.

ONION
SEED
From
The Garden
of
The Rockies



ONION
SEED
Western
Colorado
Grown
1943 Crop

Eight Yellow Sweet Spanish Onions---Weight, 18 Lbs.

Diameter, 3 9/16 Inches---Mile High Stock

Our Specialty---Yellow and White Sweet Spanish and Mt. Danvers

Famous for Heavy Yields and Fine Quality

Our Policy QUALITY FIRST---ALWAYS Our Policy